

# VoIP



**July 2003**

**Technical Sales and Marketing**

**AddPac Technology**

**[www.addpac.com](http://www.addpac.com)**

# AddPac VoIP Products Road-Map

Multi-services Specific

Application Specific

## 1/2/4/8/16~60-Ports Voice



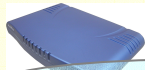
AP3100 VoIP Gateway



AP2120 VoIP Gateway



AP100x/1100 VoIP G/W Series



AP300 VoIP G/W Series



AP200 VoIP G/W Series



AP160 VoIP Gateway

## Voice over IP Solutions

### 4/8/16, 30~120-Ports Voice



AP2850 Multi-service Router



AP2830 Multi-service Router



AP2520S Secure VoIP Gateway



AP2520R VoIP Router



AP2520G VoIP Gateway



AP2110 VoIP Gateway

## VoIP Network Management SW



AP-VPMS S/W Solution

## Voice & FAX Broadcasting System



AP3120 Voice Broadcasting System



AP3220 FAX Broadcasting System



AP1601 Voice Broadcasting Terminal

General Purpose VoIP Networking

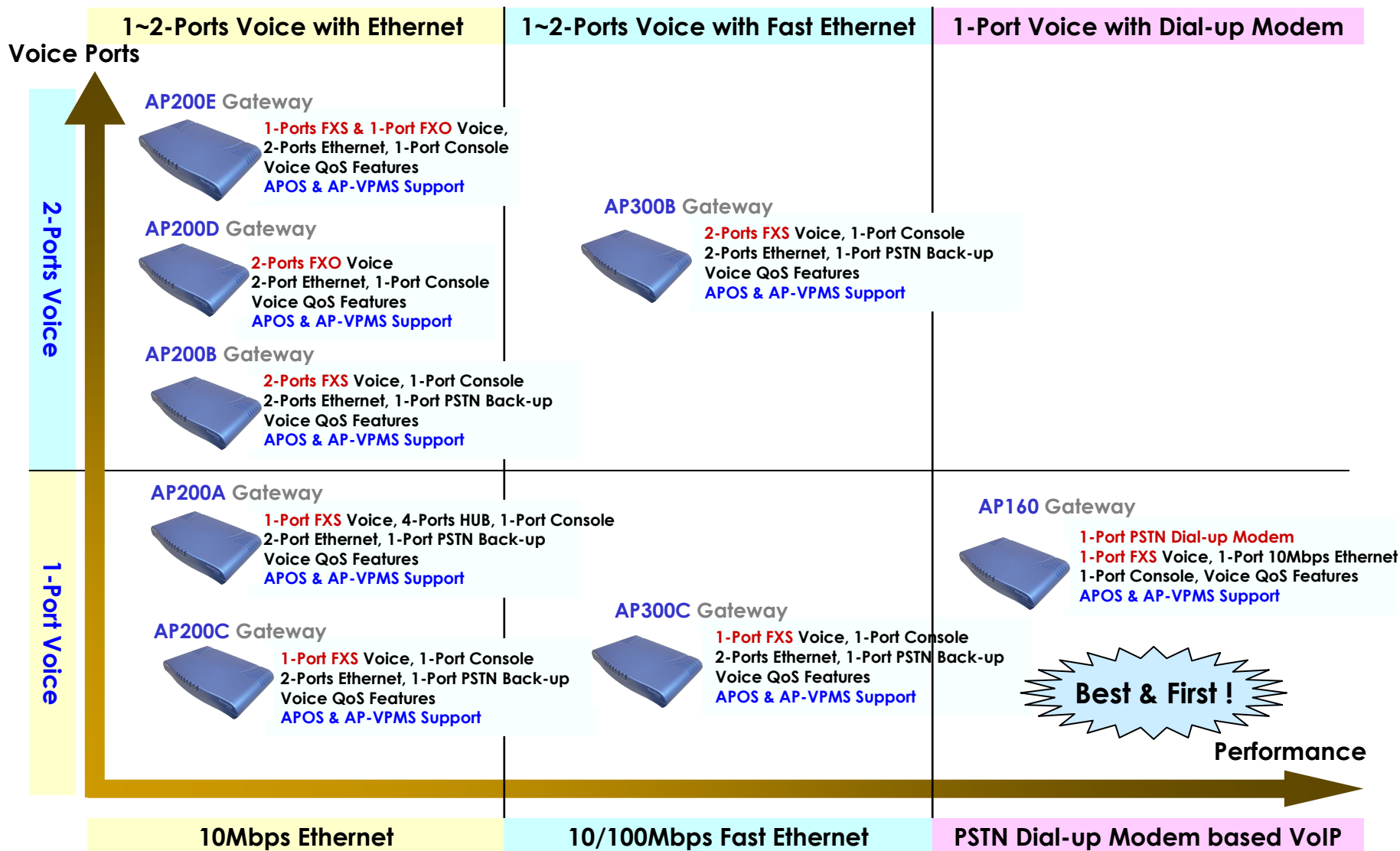
VoIP & Data Networking

IP Application Solutions

**AddPac**

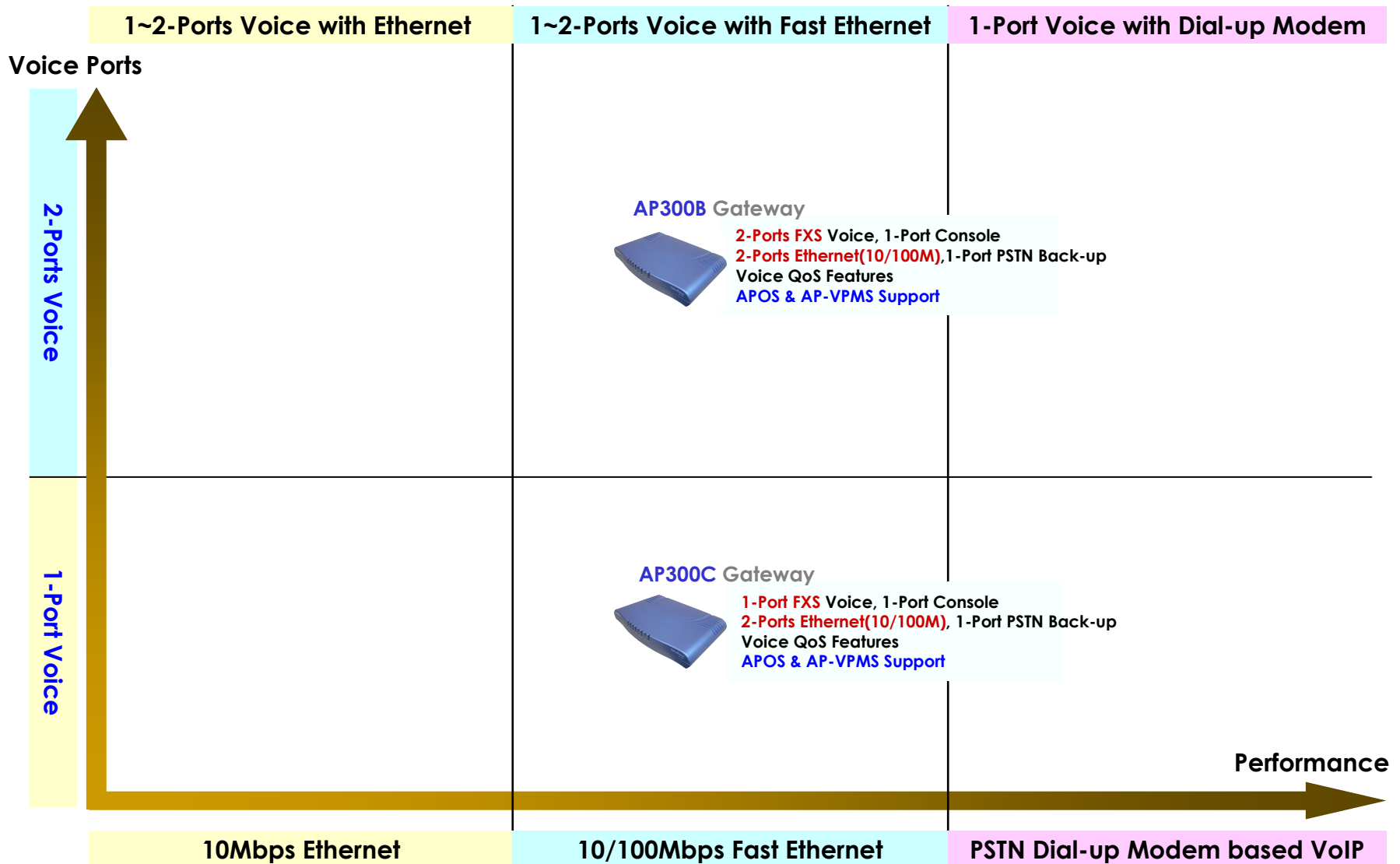
www.addpac.com

# AddPac AP160/200/300 Products Road-Map



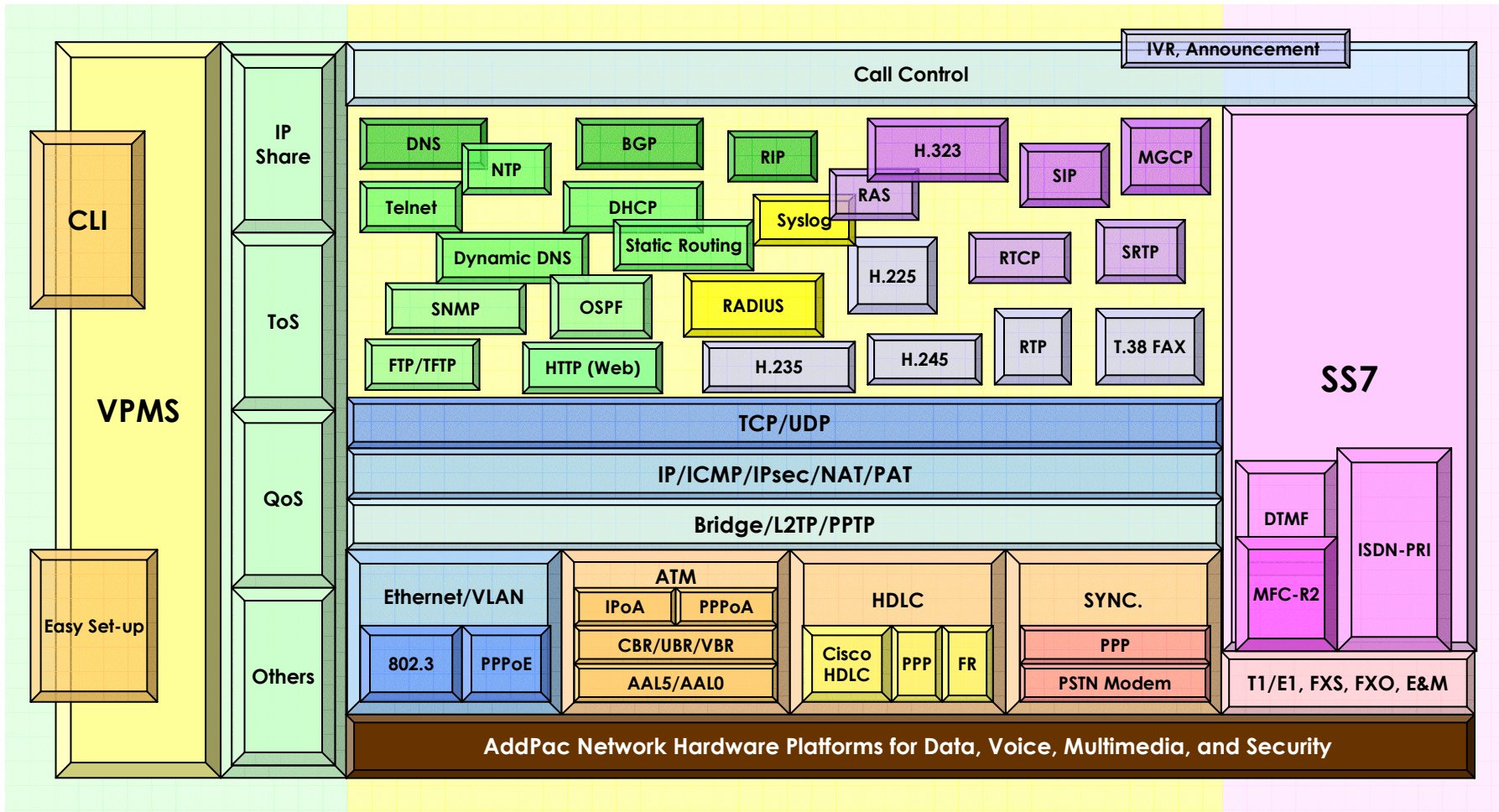


# AddPac AP300 Products Road-Map



# AP300 VoIP Gateway Product Overview

## APOS Internetworking Protocol Stack

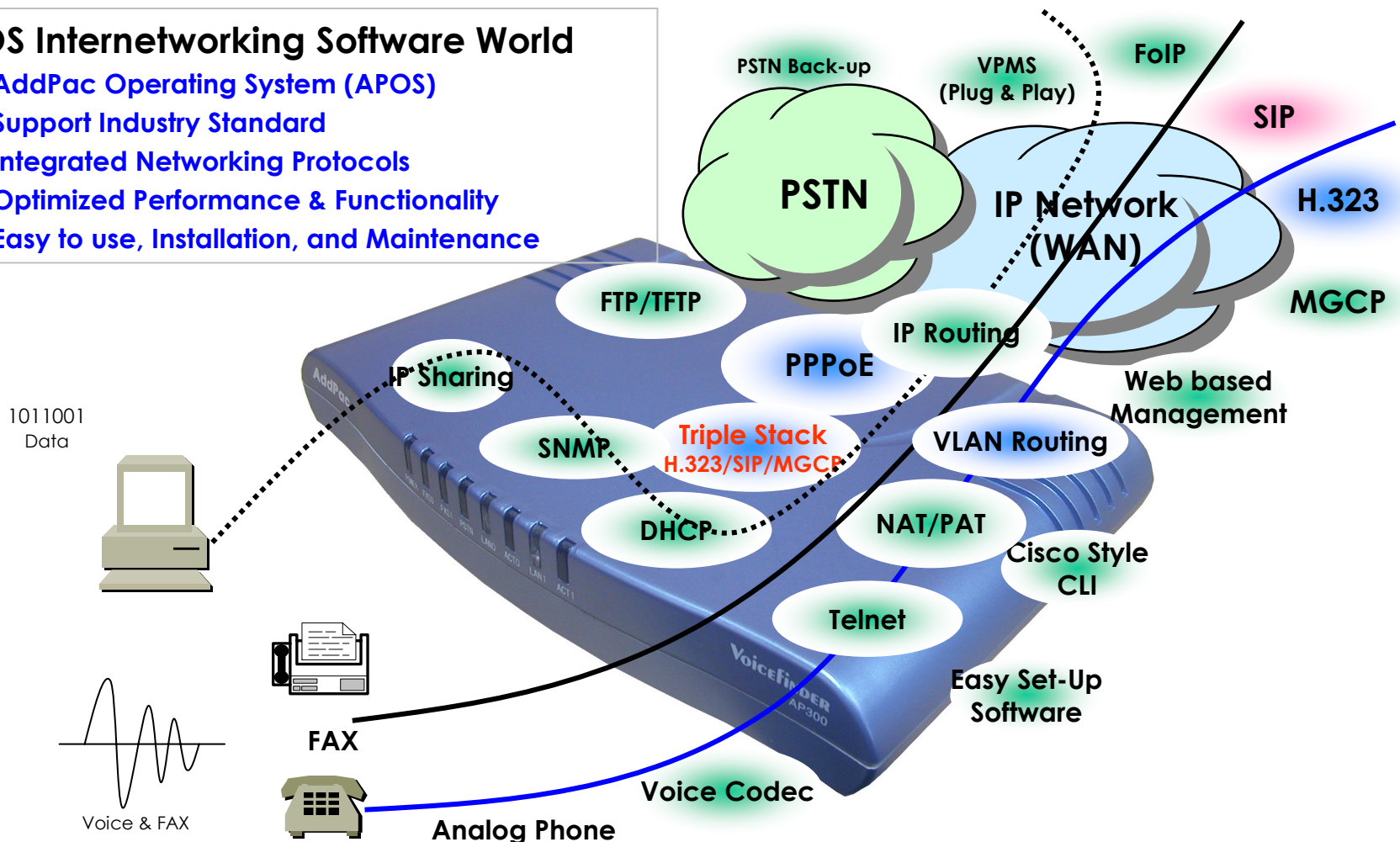


# AP300 VoIP Gateway Product Overview

## APOS Internetworking S/W World

### • APOS Internetworking Software World

- AddPac Operating System (APOS)
- Support Industry Standard
- Integrated Networking Protocols
- Optimized Performance & Functionality
- Easy to use, Installation, and Maintenance

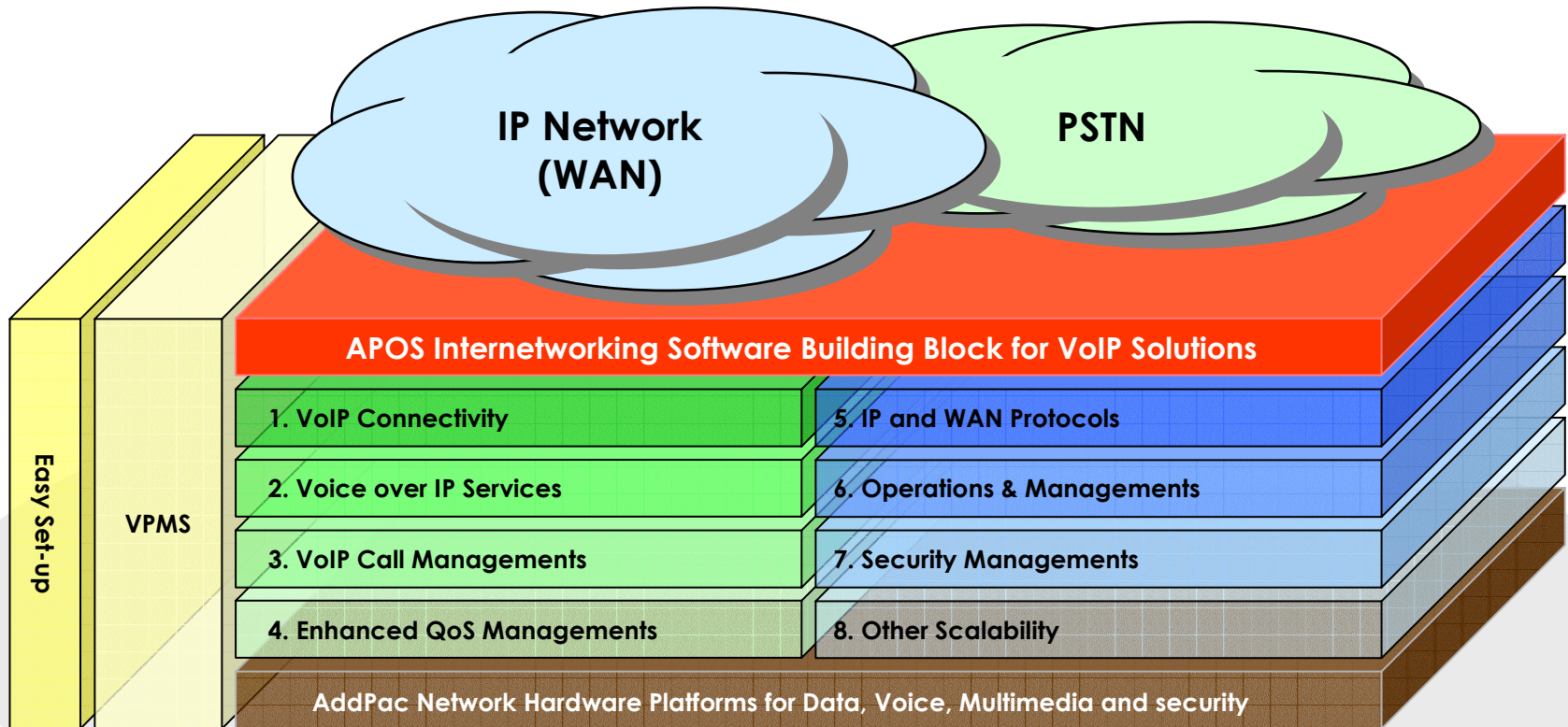


**AddPac**

[www.addpac.com](http://www.addpac.com)

# AP300 VoIP Gateway Product Overview

## APOS Internetworking S/W World (cont.)



# AP300 VoIP Gateway Product Overview

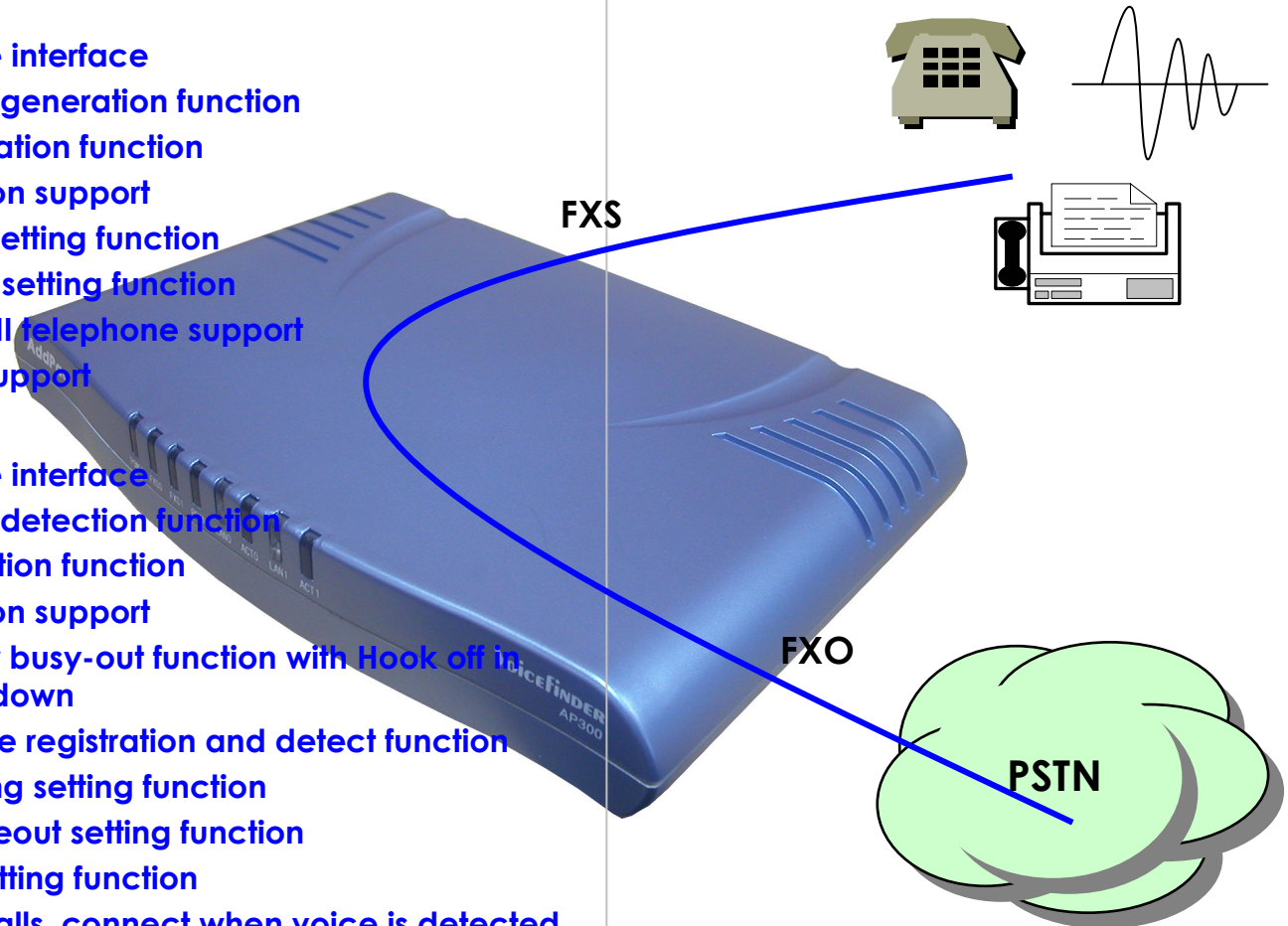
## VoIP Gateway Connectivity

### • FXS

- RJ-11 Hardware interface
- Polarity inverse generation function
- Caller-id generation function
- Busy-out function support
- Ring cadence setting function
- Ring frequency setting function
- European type II telephone support
- Surge protect support

### • FXO

- RJ-11 Hardware interface
- Polarity inverse detection function
- Caller-ID detection function
- Busy-out function support
- PSTN backup or busy-out function with Hook off in case of power down
- Clear down tone registration and detect function
- Hook flash timing setting function
- Ring detect timeout setting function
- Ring number setting function
- For outbound calls, connect when voice is detected

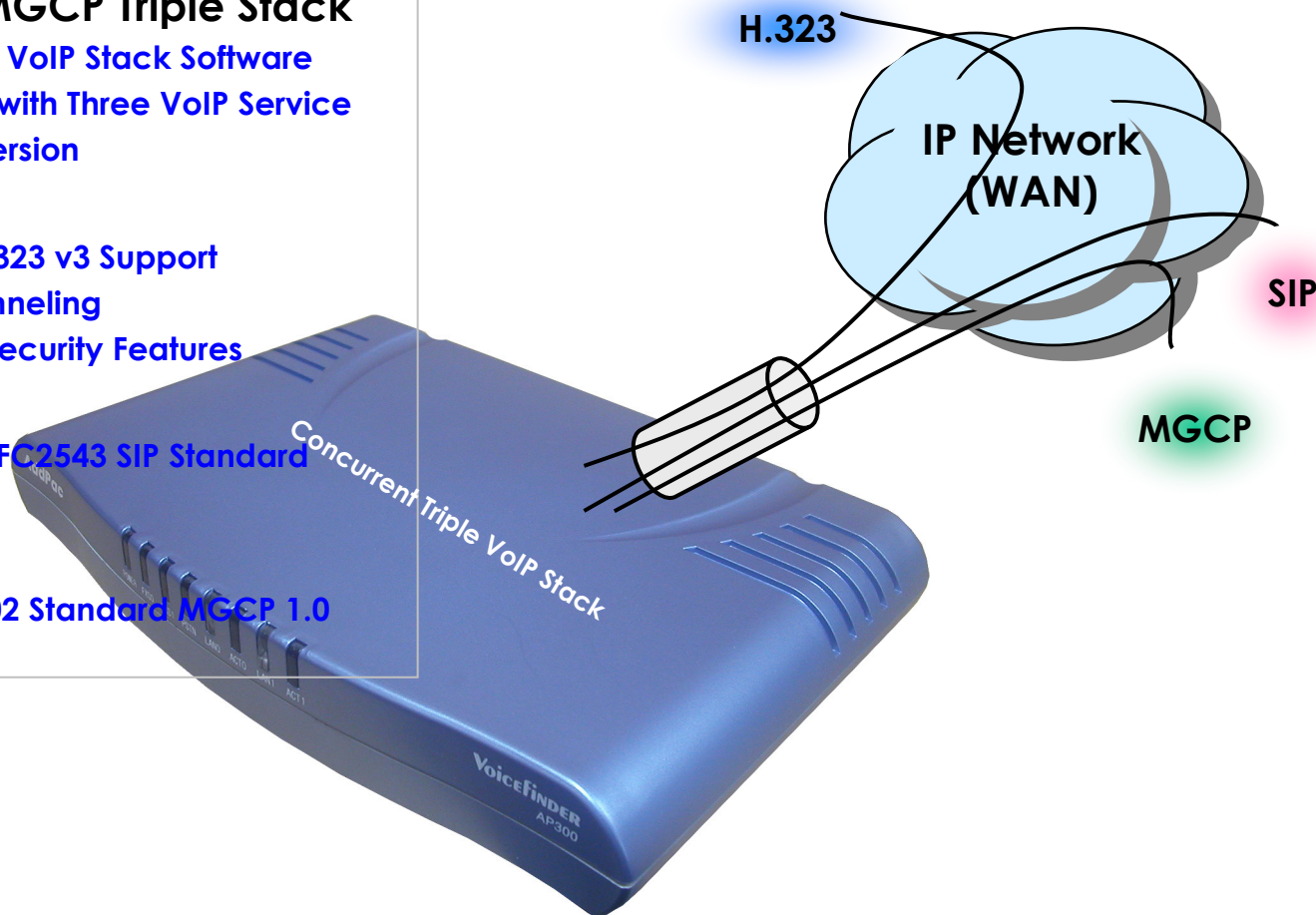




# AP300 VoIP Gateway Product Overview

## Voice over IP Service

- **H.323, SIP, and MGCP Triple Stack**
  - Concurrent Triple VoIP Stack Software
  - Single Hardware with Three VoIP Service
  - New APOS-NX Version
- **H.323**
  - ITU-T Standard H.323 v3 Support
  - Support H.245 Tunneling
  - Including H.235 Security Features
- **SIP**
  - IETF RFC3261 or RFC2543 SIP Standard
- **MGCP**
  - IETF RFC2705bis-02 Standard MGCP 1.0



# AP300 VoIP Gateway Product Overview

## Voice over IP Service (cont.)

### • H.323

- Fast connect, normal connect support
- H.245 tunneling support
- Q.931 response message setting for inbound VoIP calls
- H.245 logical channel open timing selection function
- Start H.245 procedure support
- DTMF / Hook flash relay with H.245 alphanumeric / signal
- Secondary gatekeeper support
- Gatekeeper assignment according to the domain name
- Gatekeeper discovery with multicast
- Lightweight RRQ support
- Signaling TCP port assignment
- Resource threshold setting with RAI
- H.235 clear-token, crypto-token support
- canMapAlias support
- Technical prefix (supported prefix) support
- Public IP assignment in NAT environment

### • SIP

- Gateway-based / Endpoint-based registration support
- Secondary proxy-server assignment function
- SIP signaling port change function
- SIP proxy server assignment according to the domain name
- T.38 real-time fax relay support
- DTMF relay support with RFC2833 / OPTION message
- Re-INVITE support

### • MGCP

- Secondary call agent assignment function
- Default package assignment
- Announcement Server Package, Generic Media Package, Handset Package, Line Package, Trunk Package support
- MGCP call agent assignment according to the domain name
- T.38 real-time fax relay support
- DTMF relay support based on RFC2833



# AP300 VoIP Gateway Product Overview

## Voice over IP Service (cont.)

### • Voice Codec

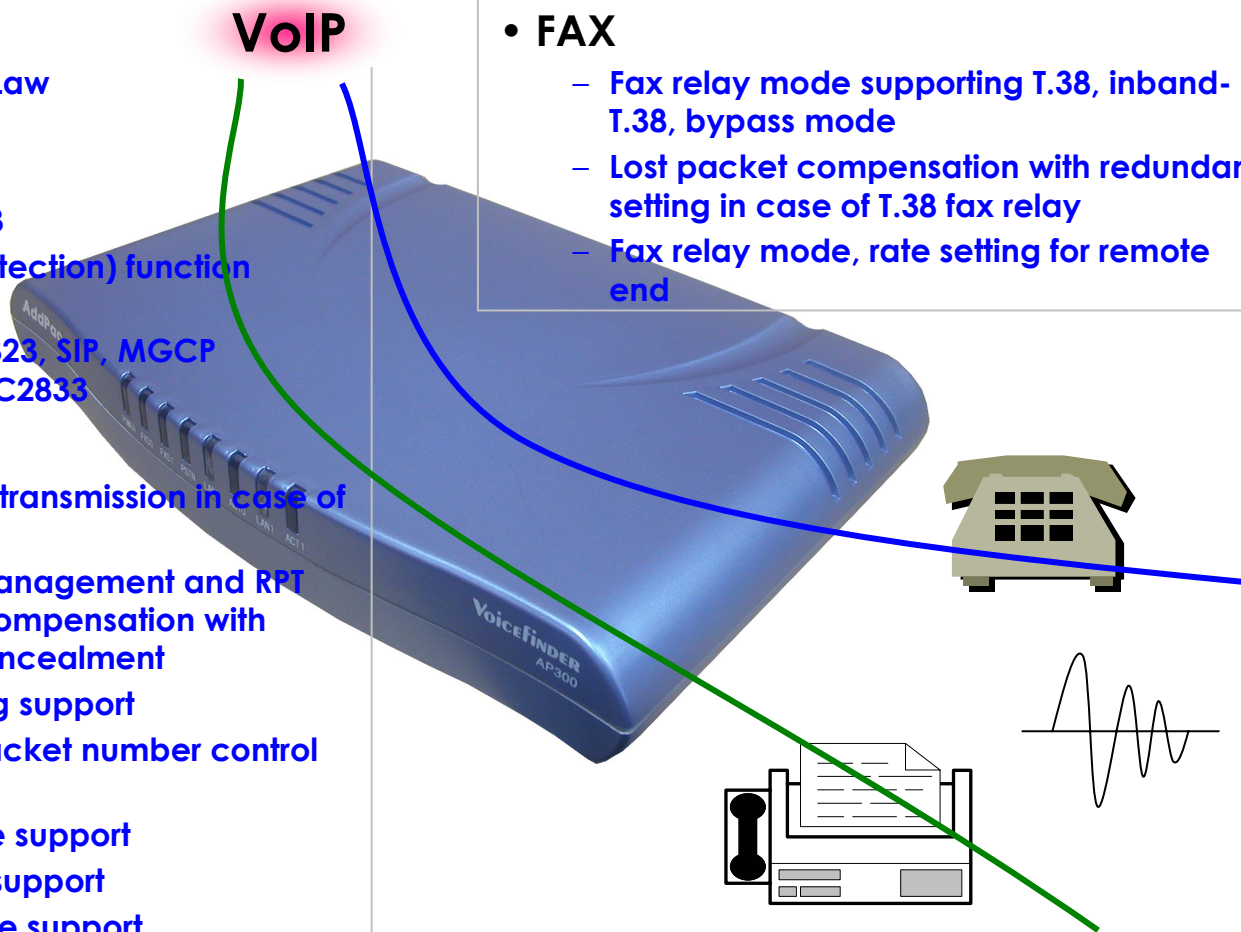
- G.711 A-Law, G.711 U-Law
- G.726 r16, G.726 r32
- G.729A
- G.723.1 r63, G.723.1 r53
- VAD (Voice Activity Detection) function support
- DTMF relay support (H.323, SIP, MGCP common) based on RFC2833

### • RTP

- Redundant RTP packet transmission in case of severe packet loss
- Dynamic jitter buffer management and RTP packet jitter and loss compensation with heuristic & DSP error concealment
- Static jitter buffer setting support
- Voice frame per RTP packet number control for each codec
- In-band ring-back tone support
- Virtual ring-back tone support
- Tone parameter change support

### • FAX

- Fax relay mode supporting T.38, inband-T.38, bypass mode
- Lost packet compensation with redundant setting in case of T.38 fax relay
- Fax relay mode, rate setting for remote end



# AP300 VoIP Gateway Product Overview

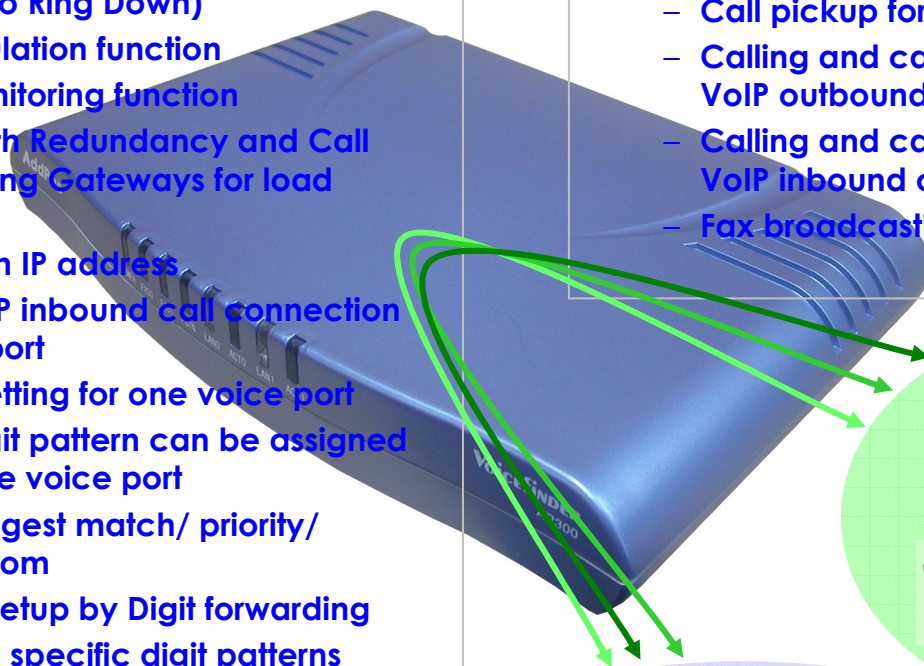
## VoIP Call Managements

### • VoIP Call Controls

- Hot line connection function with PLAR (Private Line Auto Ring Down)
- Leased line emulation function
- Connection monitoring function
- Fault tolerant with Redundancy and Call Distribution among Gateways for load balancing
- Call attempt with IP address
- H.323, SIP, MGCP inbound call connection for each voice port
- Multiple E.164 setting for one voice port
- One E.164 or digit pattern can be assigned to more than one voice port
- Hunting with Longest match/ priority/ sequence/ random
- One stage call setup by Digit forwarding
- Call barring with specific digit patterns
- Calling and called number conversion for PSTN outbound calls
- PSTN rerouting in case of VoIP call attempt failure

### • VoIP Call Controls (cont.)

- Call transfer for internal calls
- Call pickup for internal calls
- Calling and called number conversion for VoIP outbound calls
- Calling and called number conversion for VoIP inbound calls
- Fax broadcasting call control





# AP300 VoIP Gateway Product Overview

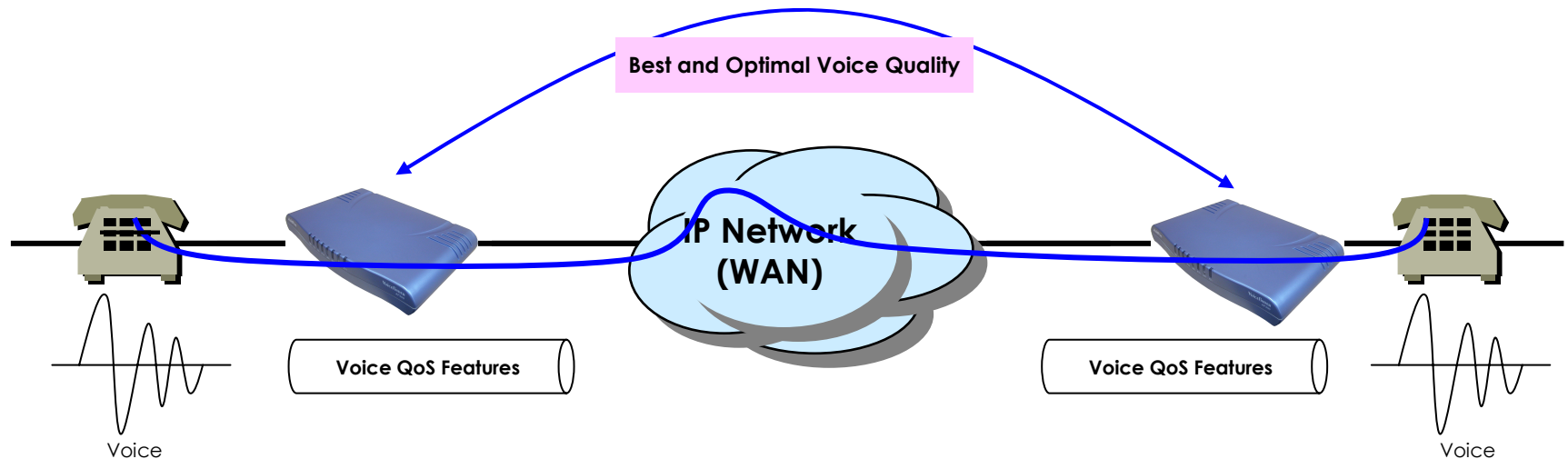
## Enhances QoS Managements

### • Enhances **Transmit** Voice QoS Features

- Voice Traffic Priority Queuing
- QoS Service Profiling
- Providing Virtual Network Transmit Algorithm
- Real-time Voice Traffic QoS Support
- RTP Packet Transmit Interval Control
- Supporting RTP Packet Redundancy Scheme
- IP Header Control such as ToS, Diffserv

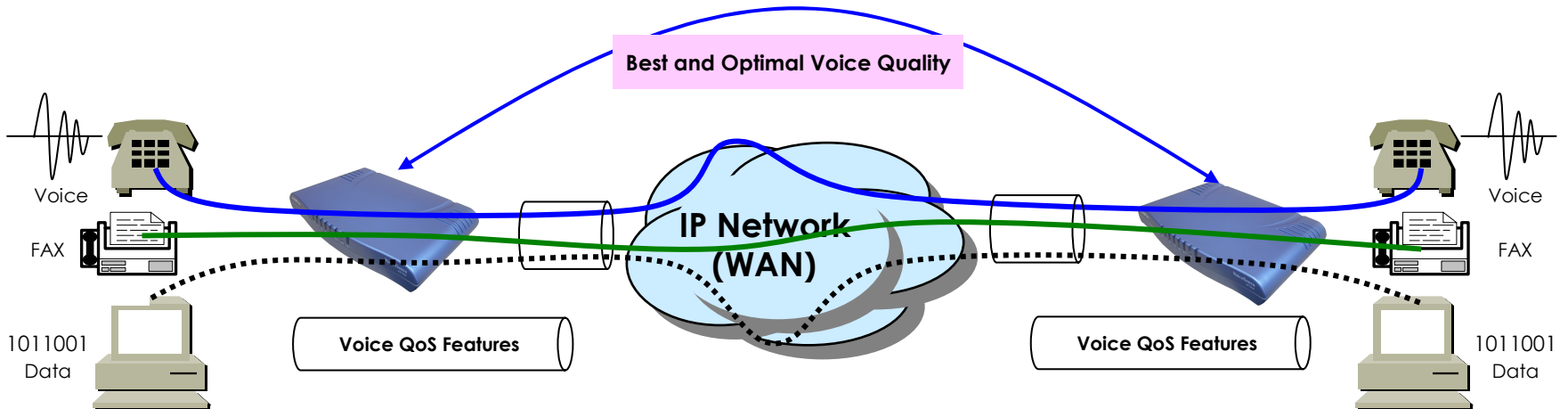
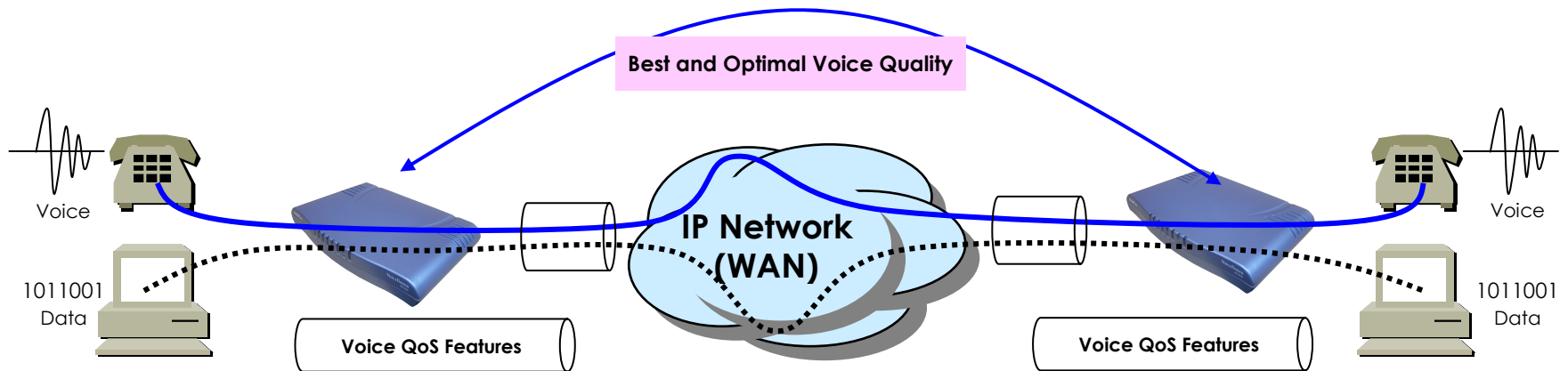
### • Enhances **Receive** Voice QoS Features

- Dynamic Jitter Buffer Management
- Error Concealment
- Support T.38 FAX Data Error Recovery Scheme



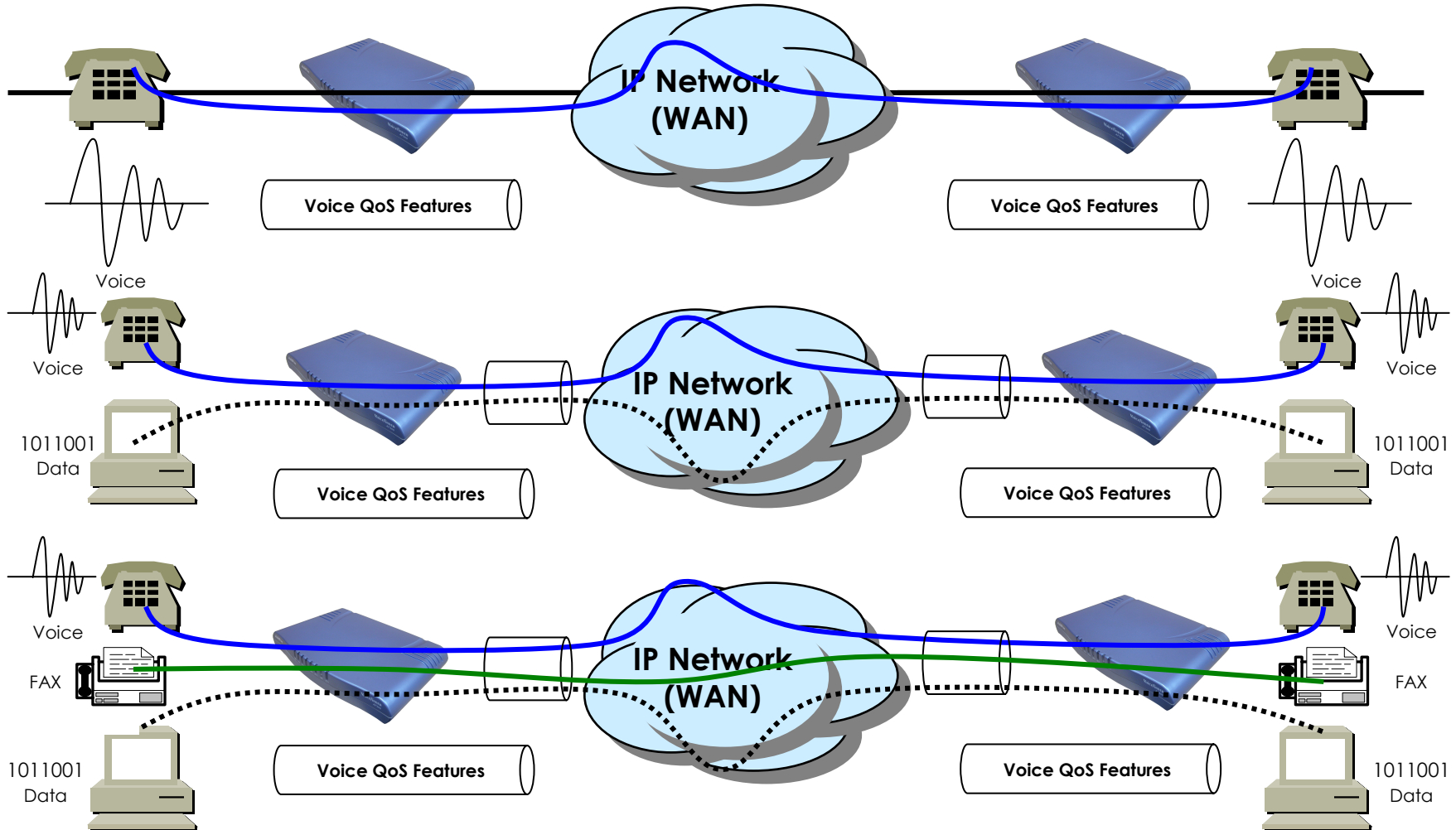
# AP300 VoIP Gateway Product Overview

## Enhances QoS Managements



# AP300 VoIP Gateway Product Overview

## Enhances QoS Managements (cont.)



# AP300 VoIP Gateway Product Overview

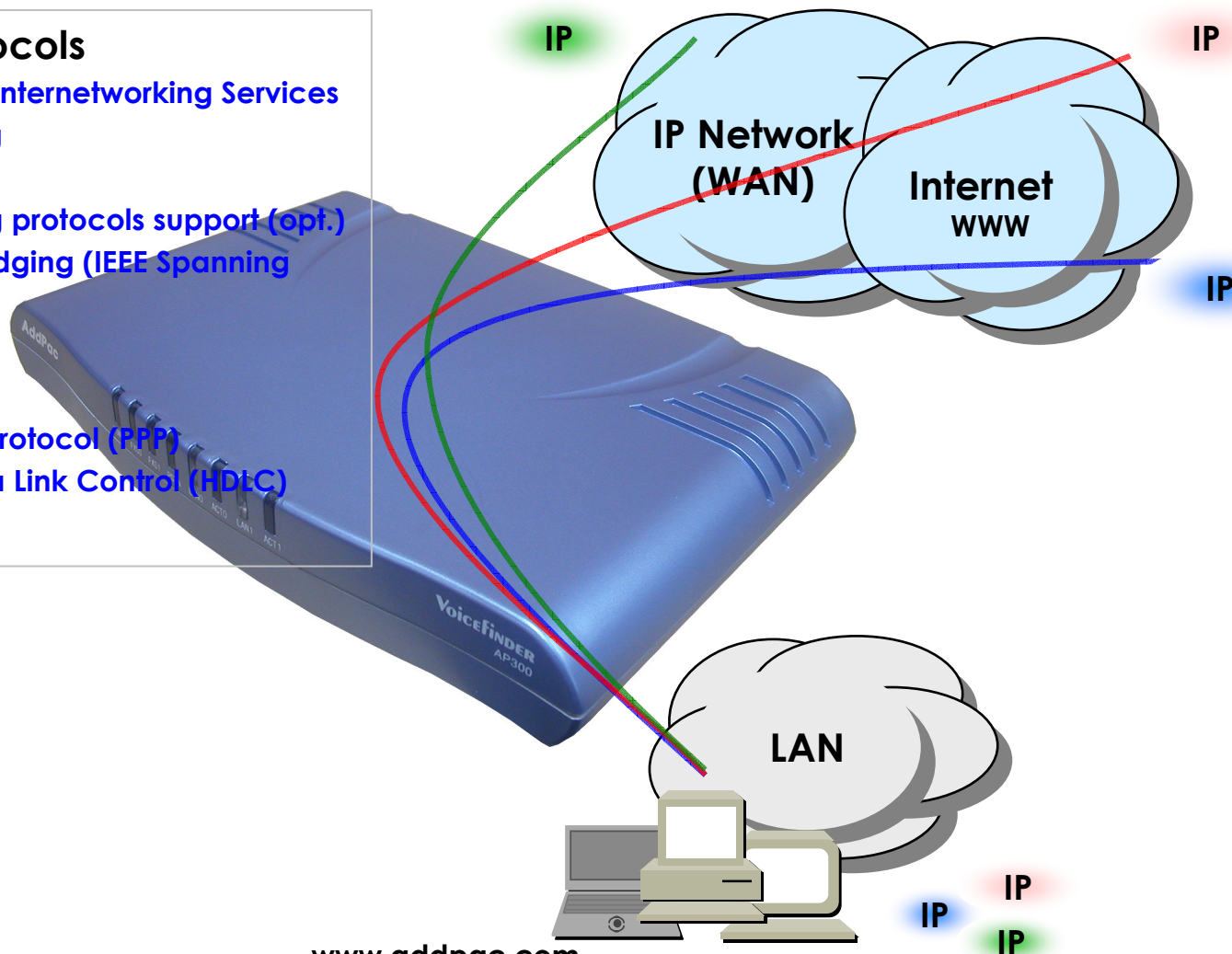
## IP and WAN Protocols

### • IP Routing Protocols

- Multi-protocol Internetworking Services
- Static IP routing
- RIP v1/v2 (opt.)
- OSPF v2 routing protocols support (opt.)
- Transparent Bridging (IEEE Spanning Tree Protocol)

### • WAN Protocols

- Point-to-Point Protocol (PPP)
- High-level Data Link Control (HDLC) Protocol





# AP300 VoIP Gateway Product Overview

## Network Managements

- **SNMP**

- Standard Simple Network Management Protocol( SNMP) Agent support
- MIB v1 and v2 Support

- **Web-based Management**

- Standard Voice Interface
- Standard PSTN Back-up Interface

- **Watch-dog Function**

- Hardware, Software watch-dog services

- **Remote Management**

- Telnet
- Rlogin
- Console

- **Auto Upgrade Service**

- HTTP server based APOS image and configuration file auto-upgrade support

- **Batch Job Function**

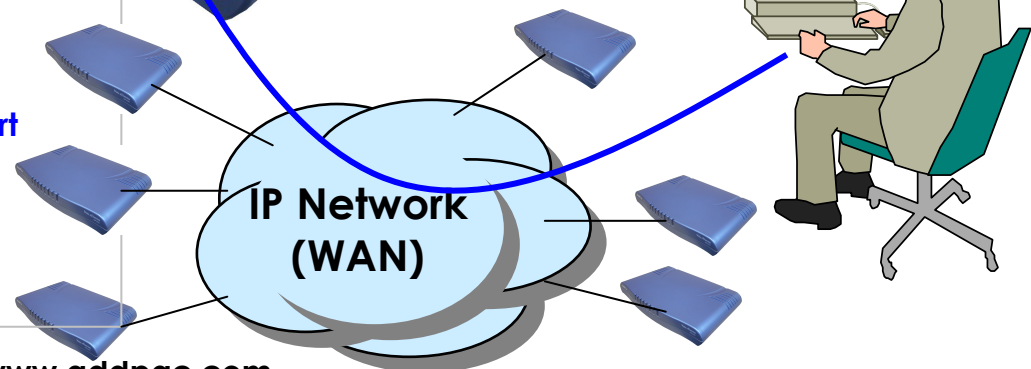
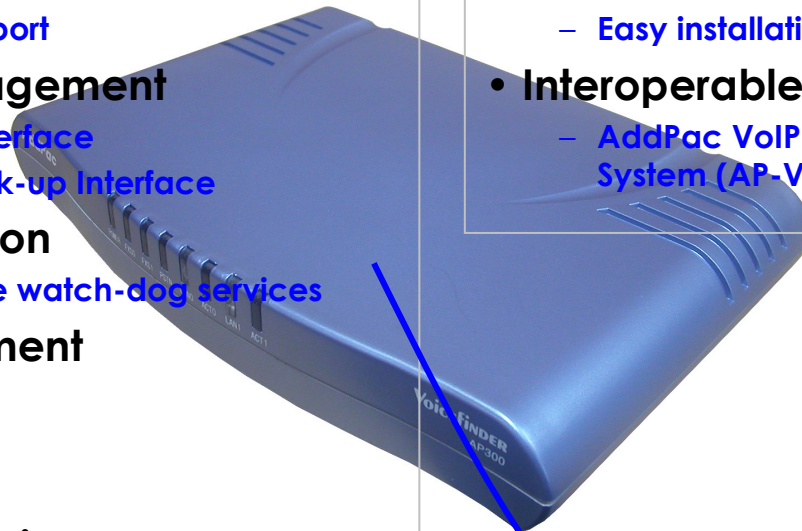
- Text based script downloading

- **Easy Set-up Service**

- MS Windows Graphical User Interface (GUI) based installation Software Solution
- Easy installation Set-up service

- **Interoperable with AP-VPMS Service**

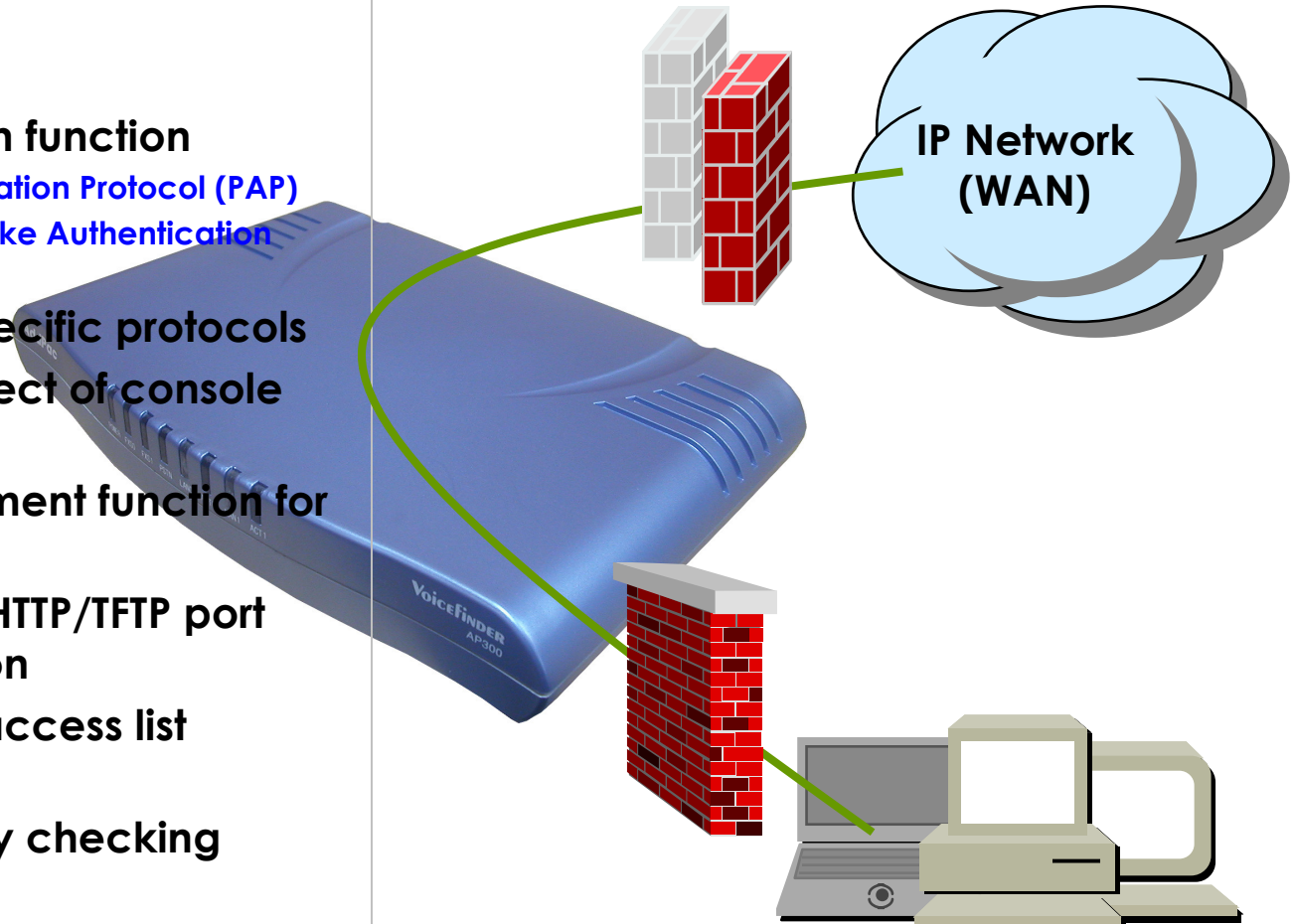
- AddPac VoIP Plug & Play Management System (AP-VPMS)



# AP300 VoIP Gateway Product Overview

## Security Managements

- IP packet filtering
- IP access list
- User authentication function
  - Password Authentication Protocol (PAP)
  - Challenge Handshake Authentication Protocol (CHAP)
- Enable/Disable specific protocols
- Auto-square connect of console and Telnet session
- Account Management function for multi-level user
- SNMP/TELNET/FTP/HTTP/TFTP port assignment function
- SNMP/TELNET/FTP access list management
- Boot mode security checking function



# AP300 VoIP Gateway Product Overview

## Network Scalability

- **IP Sharing Feature**

- Single IP Address, Multiple IP Network Access
- Public IP Address Sharing by VoIP Gateway

- **IP Sharing Network Environment**

- Support Legacy Network Environment
- xDSL Modem based Broadband Network
- Cable Modem based Broadband Network
- Leased line Network Environment

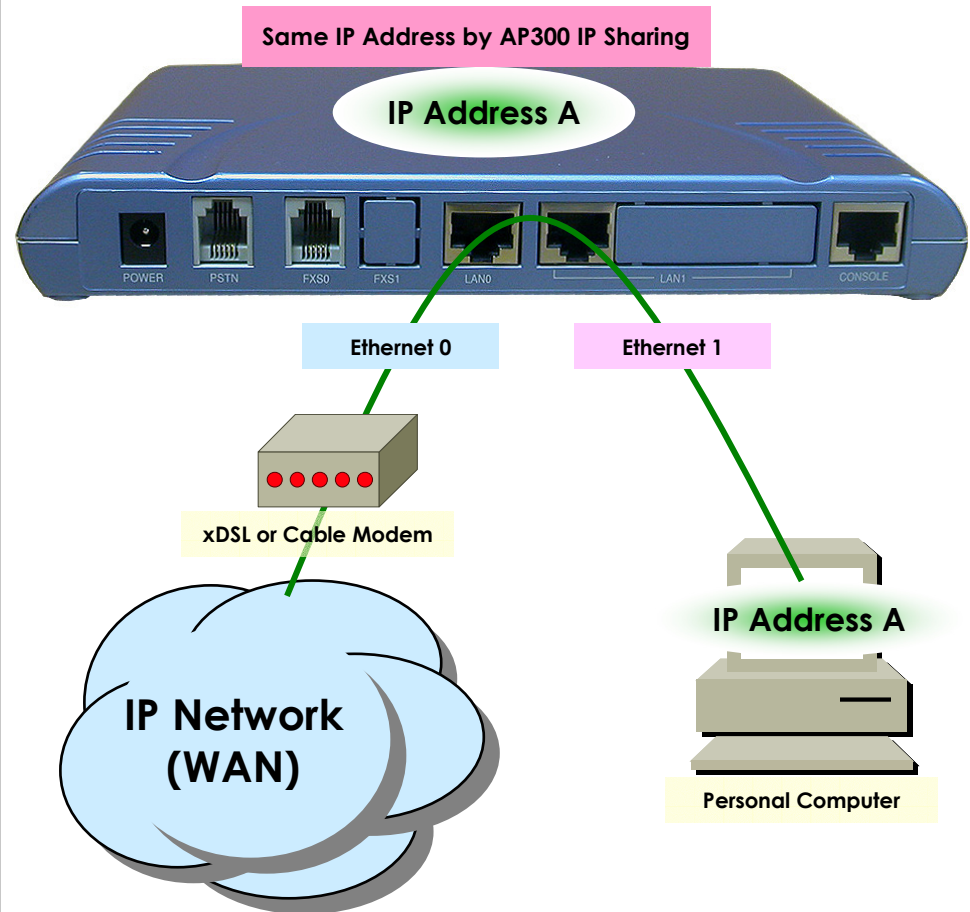
- **Both support Fixed and Dynamic IP**

- **Support Standard Network Protocols**

- PPPoE
- PPPTP
- DHCP



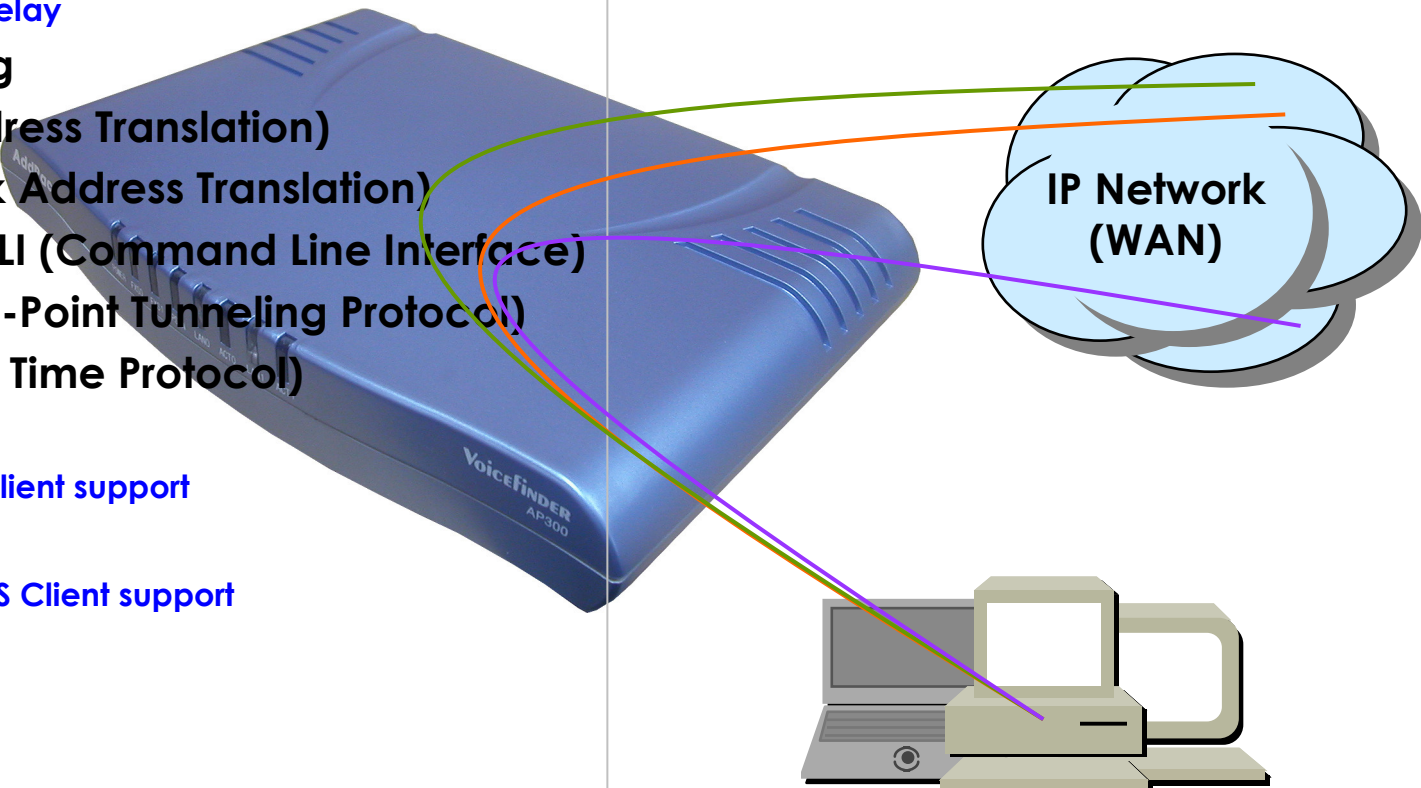
AP300 VoIP Gateway



# AP300 VoIP Gateway Product Overview

## Network Scalability (cont.)

- **Bridging Service**
  - Spanning Tree Bridging protocol (IEEE) support
- **DHCP**
  - Server and Relay
- **IP Accounting**
- **PAT (Port Address Translation)**
- **NAT (Network Address Translation)**
- **Cisco Style CLI (Command Line Interface)**
- **PPTP (Point-to-Point Tunneling Protocol)**
- **NTP (Network Time Protocol)**
- **FTP/TFTP**
  - Server and Client support
- **DNS**
  - Dynamic DNS Client support

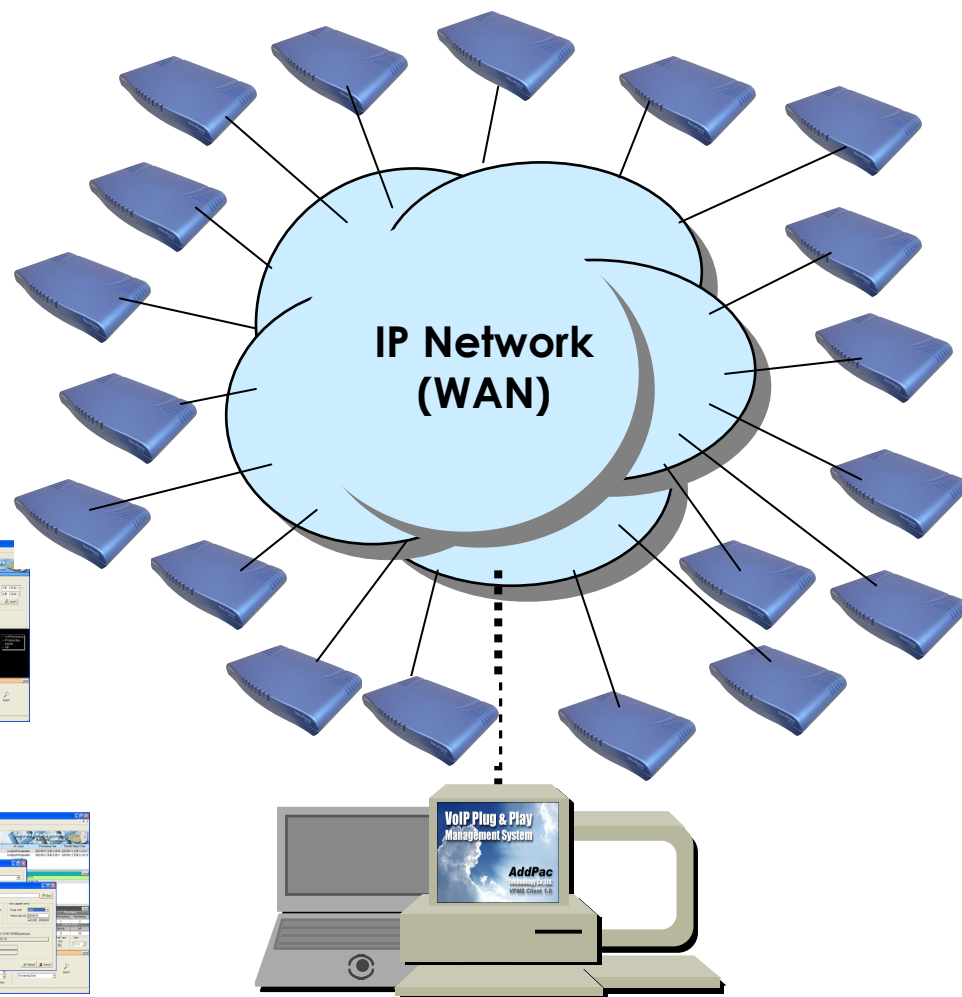




# AP300 VoIP Gateway Product Overview

## VoIP Plug & Play System (VPMS)

- **AddPac AP-VPMS Support**
  - AddPac VoIP Plug & Play System (VPMS)
  - Best EMS Solutions for AddPac VoIP G/W
- **Requirements Hardware Platform**
  - Over 1GHz Intel Pentium 4 Machine
  - Over 1GB Main Memory
  - Over 40GB Hard Disk Memory
  - Microsoft Windows Advanced Server or Windows 2000 Server or Windows XP Professional
  - DBMS : Microsoft MS-SQL Server 2000



**AddPac**

[www.addpac.com](http://www.addpac.com)

# AP300 VoIP Gateway Product Overview

## AP300 Network Configurations



Front View Side of AP300 Series



### AP300C VoIP Gateway

- 1-Port Voice Interface for VoIP Service
- 1-Port PSTN Back-up Service
- 2-Ports 10/100 BaseT Fast Ethernet Interface
- 1-Port RS-232C Console Port



### AP300B VoIP Gateway

- 2-Ports Voice Interface for VoIP Service
- 1-Port PSTN Back-up Service
- 2-Ports 10/100 BaseT Fast Ethernet Interface
- 1-Port RS-232C Console Port

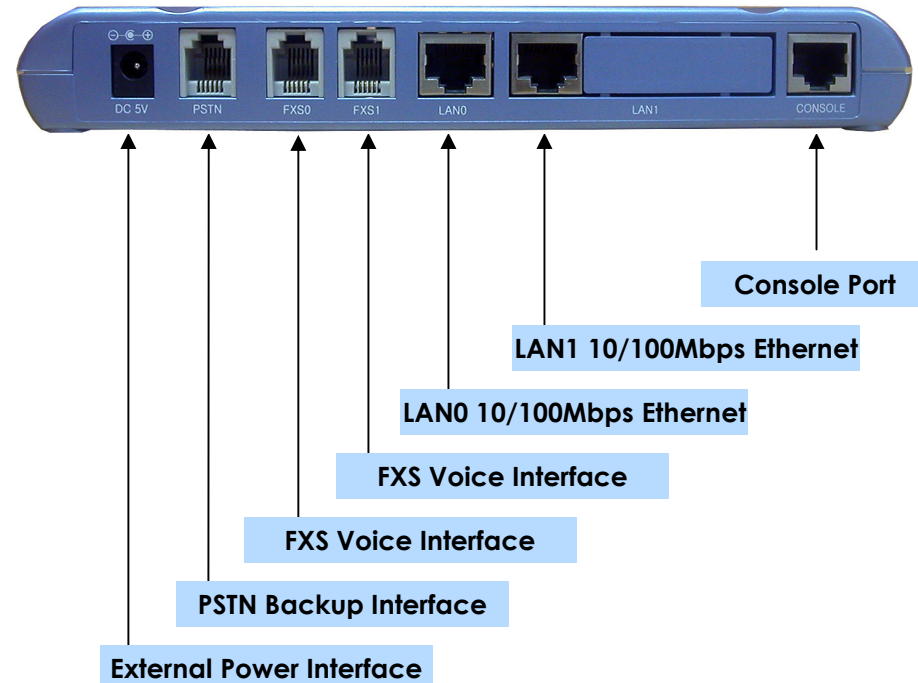
# AP300 VoIP Gateway Product Overview

## AP300 Hardware Specification

### Hardware Specifications

AP300 VoIP Series	Basic Specifications
CPU	64Bit RISC Microprocessor
Voice Interface	1~2-Ports FXS Voice Interface(RJ-11)
Ethernet Interface	2-Ports 10/100Mbps Ethernet Interface(RJ-45)
Console Port	1-Port RS-232C Console Port(RJ-45)
PSTN Backup Port	1-Port PSTN Backup Port(RJ-11)
Flash Memory	2Mbyte High-speed Flash Memory
Base Memory	32Mbyte High-speed SDRAM
Boot Memory	512Kbyte Flash Memory
Power Requirement	External Power Supply Adaptor / VAC 110~220V, 50/60Hz, 5Watt
Operating Temperature	0°C ~ 45°C (32 °F ~ 112°F)
Storage Temperature	-40°C ~ 85°C (-40°C ~ 185°F)
Relative Humidity	5% ~ 95% (Non-condensing)
Dimensions	26mm x 200mm x 137mm (H x W x D)
Weight (g)	400g

### Network interface Configurations



# AP300 VoIP Gateway Product Overview

## AP300 Networking Interface

- **High-performance Hardware**

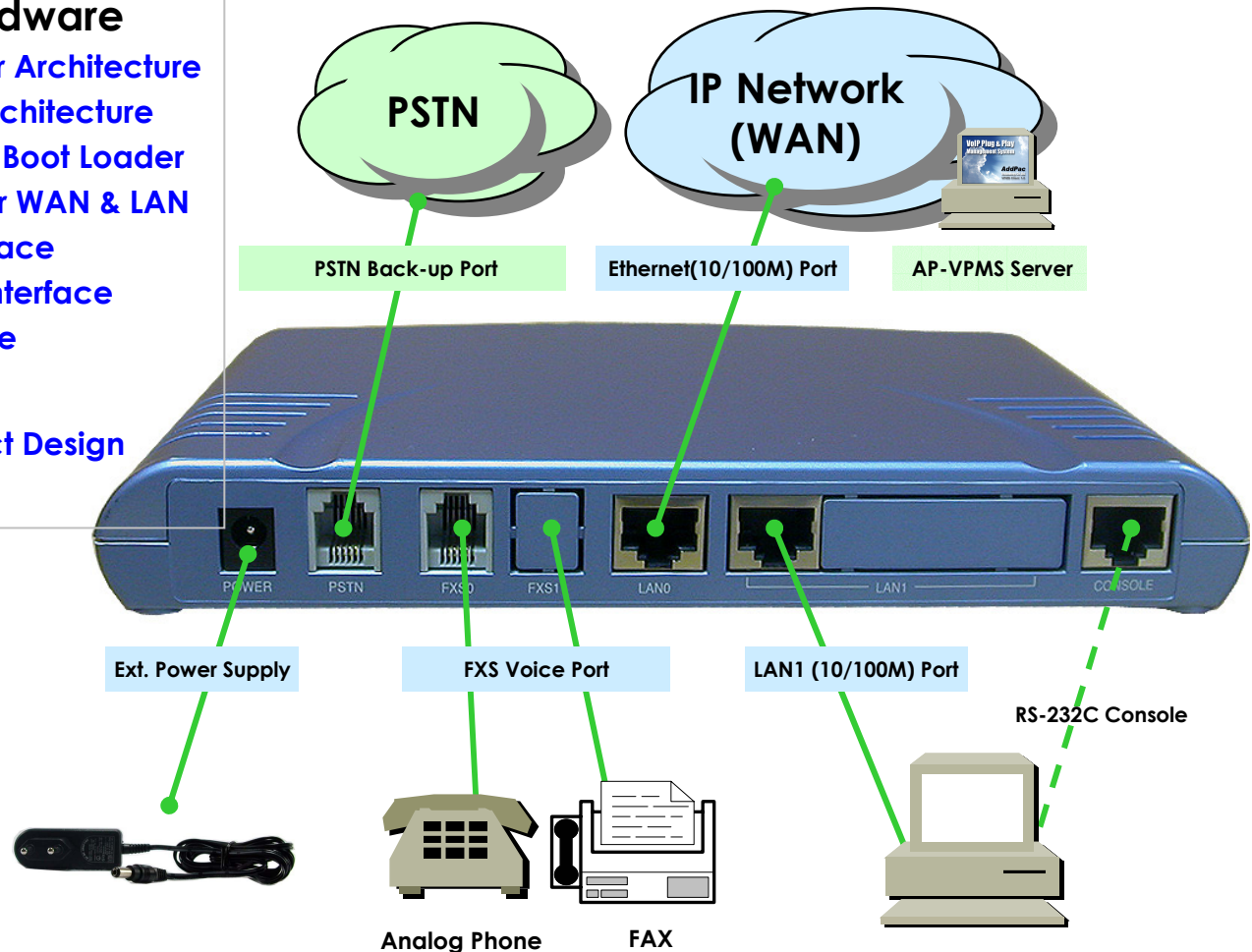
- 32bit RISC Microprocessor Architecture
- High-performance DSP Architecture
- High-speed Memory with Boot Loader
- Dual Ethernet Interface for WAN & LAN
- Standard FXS Voice Interface
- Standard PSTN Back-up Interface
- RS-232C Console Interface

- **Compact Design**

- Small, Light, and Compact Design



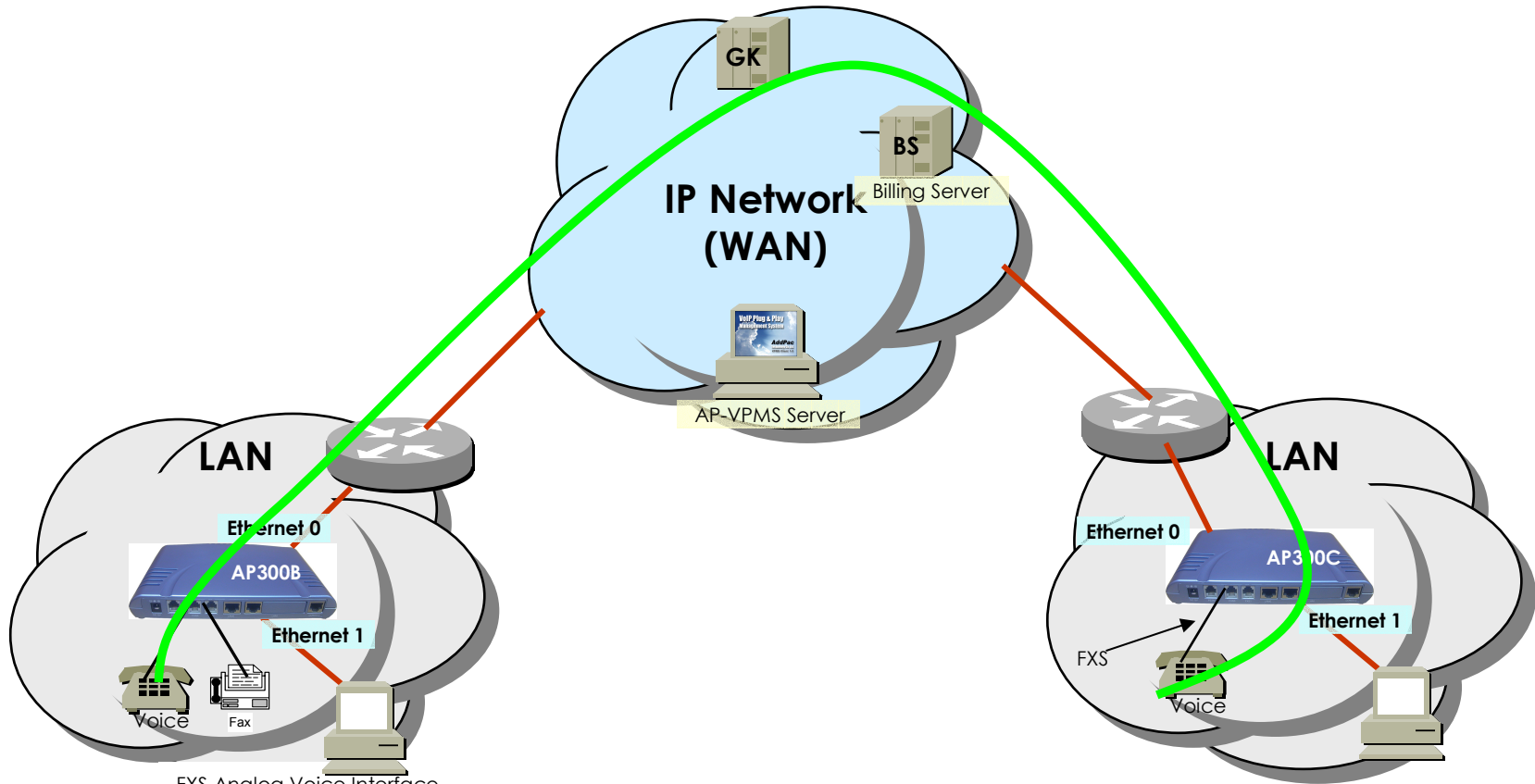
AP300 VoIP Gateway







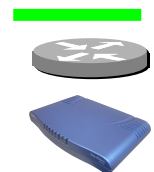
# AP300 Voice Networking Configuration




## VoIP-to-VoIP Gateway Service



FXS Analog Voice Interface

-  PSTN Analog Voice Interface
-  Ethernet or WAN Interface



-  Voice and Data Flow
-  Leased Line/ATM/Frame-Relay/IP Router, xDSL/Cable Modem, etc.
-  AddPac AP300 Voice over IP Gateway Series ( B, C)

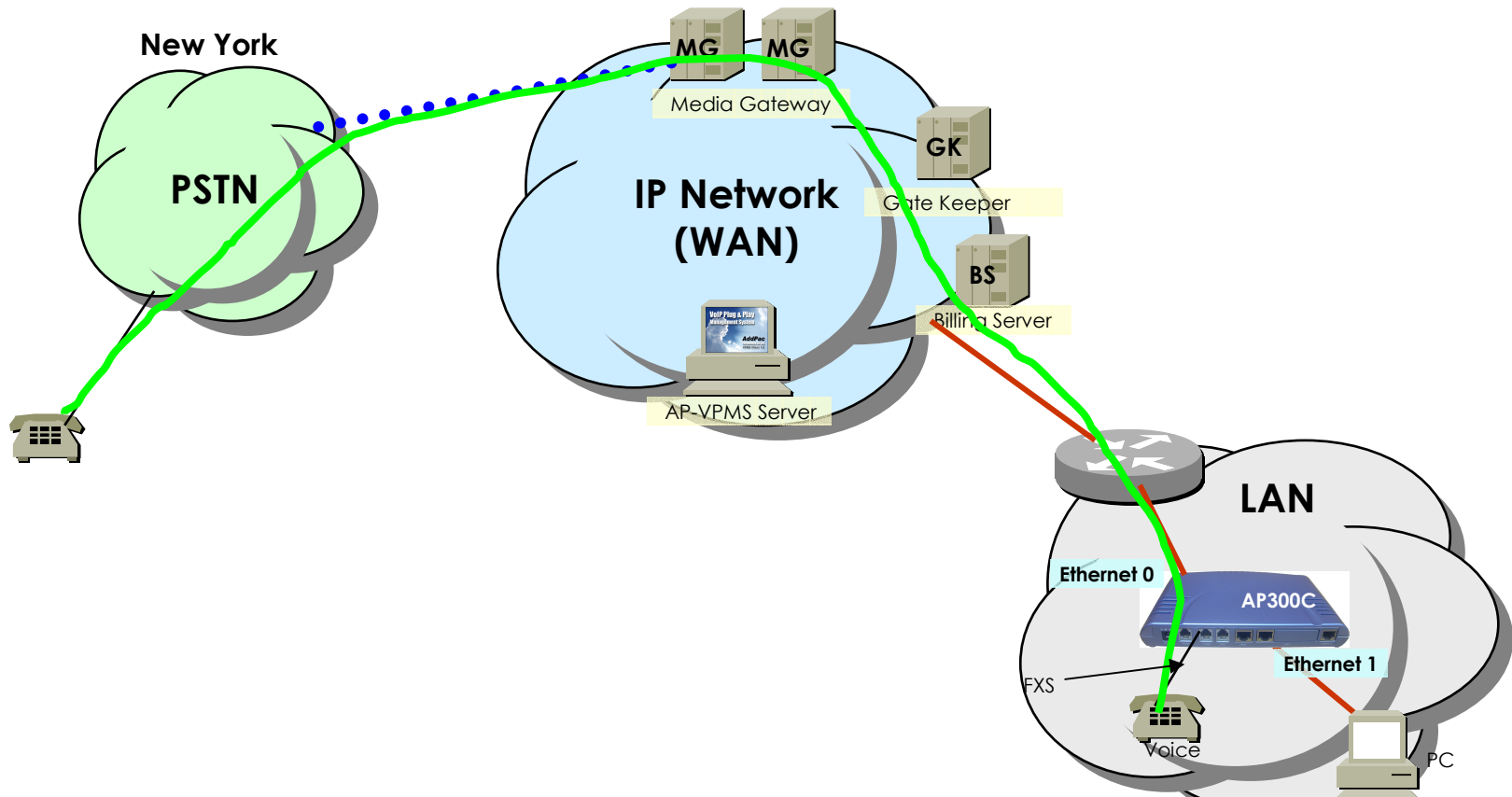
TRUNK n x E1 Voice Interface for PSTN Interworking









[www.addpac.com](http://www.addpac.com)

# AP300 Voice Networking Configuration

## VoIP Gateway-to-PSTN Service



-  FXS Analog Voice Interface
-  PSTN Analog Voice Interface
-  Ethernet or WAN Interface

-  Voice and Data Flow
-  Leased Line/ATM/Frame-Relay/IP Router, xDSL/Cable Modem, etc.
-  AddPac AP300 Voice over IP Gateway Series ( B, C)

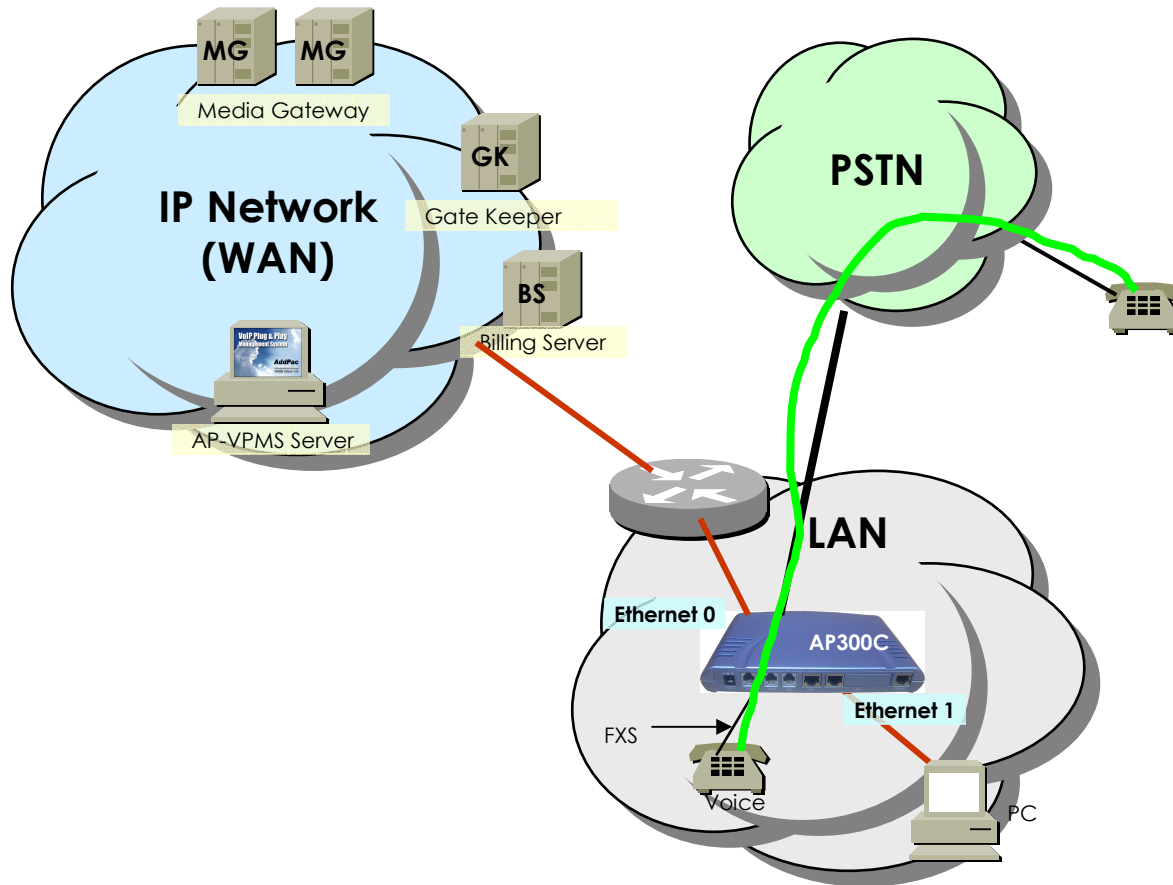








TRUNK n x E1 Voice Interface for PSTN Interworking

[www.addpac.com](http://www.addpac.com)

# AP300 Voice Networking Configuration

## PSTN Backup Service



-  FXS Analog Voice Interface
-  PSTN Analog Voice Interface
-  Ethernet or WAN Interface
-  Voice and Data Flow
-  Leased Line/ATM/Frame-Relay/IP Router, xDSL/Cable Modem, etc.
-  AddPac AP300 Voice over IP Gateway Series ( B, C)

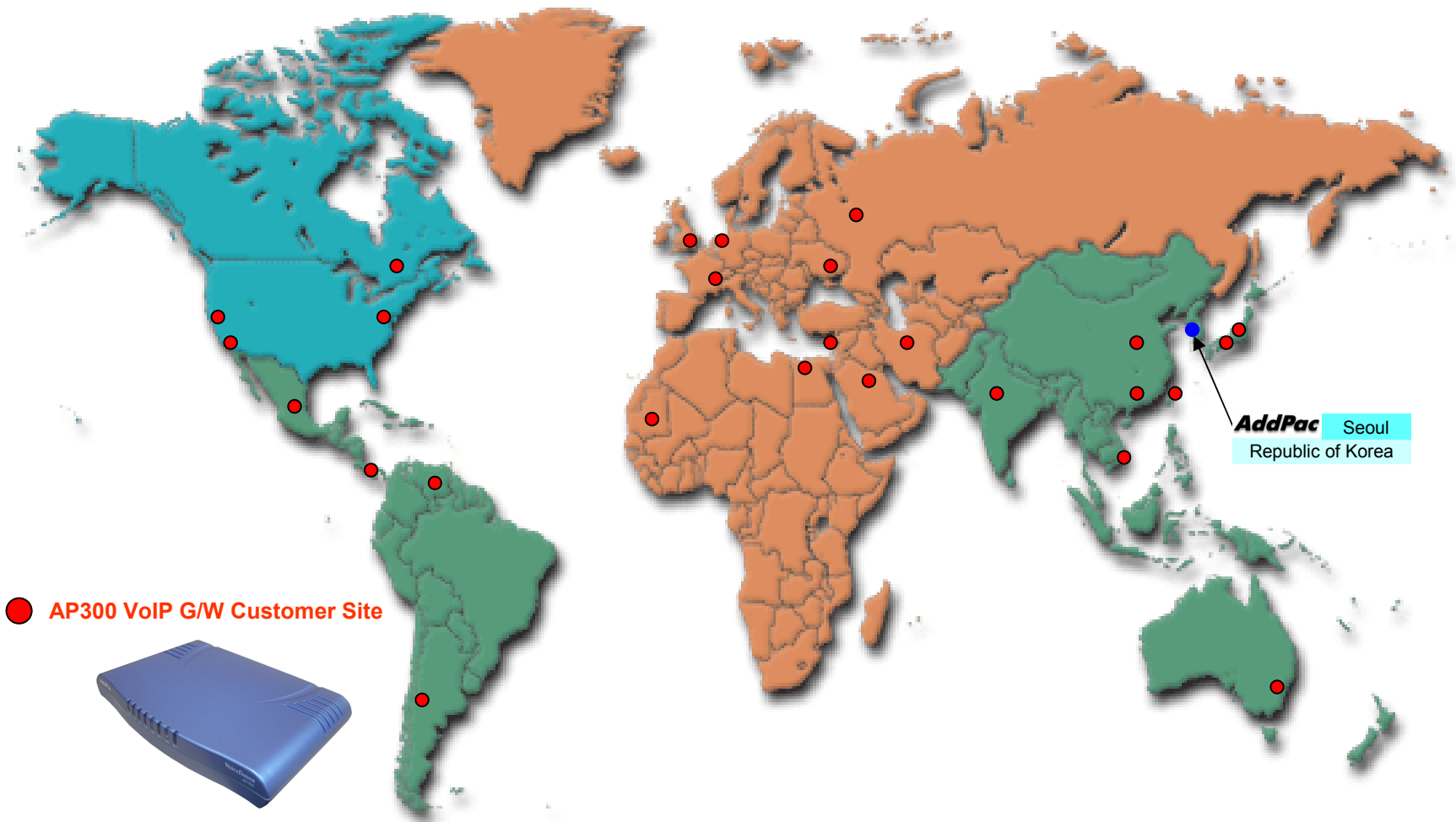


TRUNK n x E1 Voice Interface for PSTN Interworking

[www.addpac.com](http://www.addpac.com)

# AP300 VoIP Gateway Product Overview

## AP300 World-Wide Customer Site



**AddPac**

[www.addpac.com](http://www.addpac.com)



# AP300 VoIP Gateway Product Overview

## AP300 Ordering and Pricing

### • AP300 Ordering Information

#### – Order No :

AP300C VoIP Gateway

#### Hardware

- High-speed 32bit RISC CPU
- 1-Ports FXS Voice port Configuration
- 2-Ports Ethernet (10/100MB)
- 1-Port PSTN Back-up
- 1-Port RS-232C Console
- Including Network Cable Set

#### AP300B VoIP Gateway Hardware

- 2-Port FXS Voice port Configuration
- Including AP300C Configuration

#### – Built-in APOS Internetworking Software

#### – Including 1-Year Hardware Warranty

#### – Product Documents

- Installation Guide (PDF)
- Quick APOS Operation Guide (PDF)
- APOS Operation Guide (PDF)

### • Pricing

#### – AddPac Technology Regional Sales Managers


#### – Authorized Sales and Marketing Representatives

#### – Please Contact [www.addpac.com](http://www.addpac.com)



# AP300 VoIP Gateway Product Overview

## AP300 Series Comparison Table

	AP300 VoIP Gateway Series	
	AP300B	AP300C
▶ FXS Voice Ports (RJ11)	2	1
▶ FXO Voice Port (RJ11)	-	-
▶ PSTN Backup Voice Port (RJ11)	1	1
▶ 10/100Mbps Ethernet Ports (RJ45)	2	2
▶ HUB Ports (RJ45)	-	-
▶ Console Ports (RJ45)	1	1
▶ CPU	64Bit RISC	64Bit RISC
▶ Flash Memory	2Mbyte	2Mbyte
▶ Base Memory	32Mbyte	32Mbyte
▶ Power Supply	Ext. PSU	Ext. PSU
▶ Internetworking OS	APOS	APOS
▶ H.323, SIP VoIP Protocol, T38 FAX, MGCP	YES	YES
▶ PPPoE, PPTP Network Protocols	YES	YES
▶ Enhanced QoS Management Feature	YES	YES
▶ IP Routing Protocols Including NAT	YES	YES
▶ Network Management Protocols	YES	YES
▶ Support Network Environments	ADSL, VDSL, Cable Modem, Leased Line, ATM, Frame-Relay, Including Conventional Broad Band Networking	

**AddPac Technology Co., Ltd.**

**Thank you !**

**www.addpac.com**

**Technical Sales and Marketing**

**Phone : +82 2 568 3848**

**Fax : +82 2 568 3847**

**sales@addpac.com**

**AddPac**

**www.addpac.com**